

Star Barn Manual



Tools Needed:

- Cordless Drill (12V or higher)
- #2 Square Drive Bit
- Hammer
- 6' Step Ladder
- Tape Measure
- Square utility knife
w/ blade & hook blade
- Speed Square

Star Barn Manual



1



Once your site is ready you may begin construction of your floor by laying out your 4x4 runners as shown. 8' wide building includes (2) runners set in 12" from corner. 10' and 12' wide buildings include (5) runners.

2



Now place 2x4's, 16" on center, on top of 4x4's place 2 1/2" screws in each of the 4 corners. Measure from corner to corner to make sure it is square. Now you can fasten each 2x4 to the 4x4's with 2 1/2" screws.

3



Next set sheathing in place and make sure the sheathing is flush on both sides. Secure in place, fasten with 1 1/4" screws every 8".

4



Locate the first wall panel, then set in place. Make sure wall is flush with the outside edge of floor structure. Apply pressure from the outside pushing in and fasten with 2 1/2" screws.

5



Position next wall in place as shown.

6



Secure with 2 1/2" screws.

Star Barn Manual



7



Continue with walls....

8



Insert 2 1/2" screws as shown to tie walls together.

9



Continue with walls as shown...

10



Secure with 2 1/2" screws.

11



Follow wall sheet layout.

12



Next install small end wall as shown and fasten with 2 1/2" screws.

Star Barn Manual



13



Secure top with 1 1/4" screws.

14



Continue with 1 1/4" screws every 8" on center.

15



Make sure all walls are flush on the inside before fastening.

16



Next install small wall in double door wall section.

17



Door panel will attach just as shown.

18



Fasten wall with 2 1/2" screws.

Star Barn Manual



19



Make sure walls are flush as shown and fasten with 2 1/2" screws.

20



Next Install small wall as shown.

21



On inside of the doors, you will find a 2x4 brace. Remove the brace and set aside, you will use this again to help brace.

22



On bottom inside of door, apply pressure on the door, tap on top of barrel bolt. Drill 5/16" hole for the barrel bolt.

23



Locate 3" LP Smartside siding.

24



Next install as shown and secure with 1 1/4" screws.

Star Barn Manual



25



Next fasten the latch with 1 1/4" black headed screws.

26



Install D part of latch on the inside.

27



You are ready for your trusses. Using your angle make sure the trusses are square.

28



Now take your Truss Gusset, set in place and fasten with 8 of the 1 1/4" black headed screws. Repeat on the reverse side.

29



Next install 2x12 Top Plates. Measure 4" from the outside of the wall to the end of the Top Plate.

30



Make sure the Top Plate is flush with inside of wall. Fasten with 2 1/2" screws.

Star Barn Manual



31



Continue with Top Plates

32



Next install Gable Dormer.

33



Secure with 2 1/2" screws.

34



After Gable Dormer is installed. Finish installing 2x12 Top Plates.

35



Now install 2x12 Top Plate on top of Gable.
Secure with 2 1/2" screws.

36



Install Top Plates on backside as shown.

Star Barn Manual



37



Fasten with 2 1/2" screws.

38



Continue with Top Plates

39



Locate Gable Truss panels

40



Placing the 2 gable sections together (as shown above) Make sure it is square.

41



Use 2 1/2" screws to secure gables together.

42



Make sure the bottom is flush and secure with 2 1/2" screws.

Star Barn Manual



43



Now locate your vent frame.

44



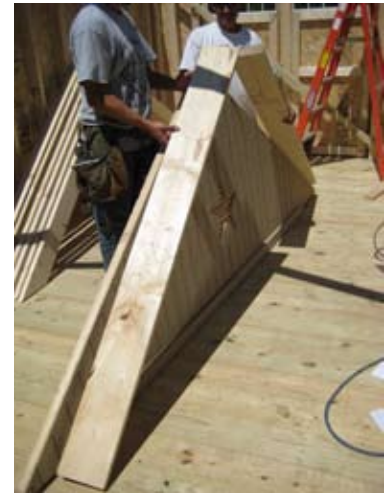
Lay vent in place, make sure the star is covered.

45



Secure with 2 1/2" screws on all corners.

46



Next install 2x8 Top Plates

47



Make sure the Top Plate is flush on top of Gable as shown. Secure with 2 1/2" screws coming from inside out.

48



Repeat from last picture on the other end.

Star Barn Manual



49



Use angle square to make sure peaks meet as shown. Secure with 2 1/2" screws.

50



Next install Gable

51



Make sure plates are flush on the outside, secure with 2 1/2" screws.

52



Now install rafter with Gusset on one side. Install beside the front dormer as shown.

53



Fasten from underneath 2x12 into 2x4

54



Install 2x6 Ridge Pole as shown after the 2 rafters are set.

Star Barn Manual



55



Use angle square, keep 2x6 flush with rafter on bottom edge.

56



Next install T-bar

57



Make sure T-bar is flush on top of Ridge Pole, fasten with 2 1/2" screws.

58



Fasten T-bar to Gable with 2 1/2" screws as shown.

59



Continue with trusses.

60



You will have 3 rafters that are 3/4" shorter than the rest. Install them in Ridge Pole area.

Star Barn Manual



61



Locate sheathing layout.

62



Install first piece of sheathing as shown and secure with 1 1/4" screws.

63



Make sure sheathing reveals are the same on the bottom.

64



Continue with sheathing.

65



Install next piece and secure with 1 1/4" screws.

66



Next fasten bottom corner with 1 1/4" screw as shown.

Star Barn Manual



67



Make sure rafters are in place before fastening.
Secure 1 1/4" screws every 8" on center.

68



Continue with sheathing.

69



Back side sheathing is complete.

70



Install front side as shown. Lay the sheathing per diagram.

71



Continue from last picture.

72



Follow sheathing diagram.

Star Barn Manual



73



Install last row as shown.

74



Fasten with 1 1/4" screw 8" on center.

75



continue with roof sheathing.

76



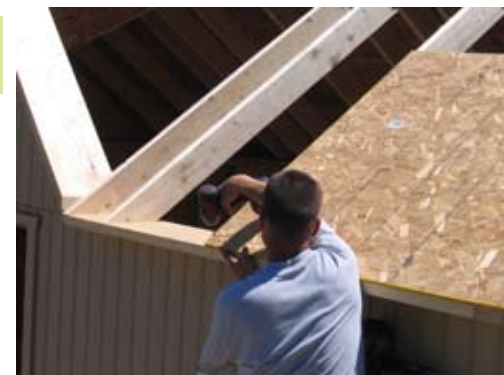
Next install dormer sheathing

77



Now you will start on the other end and work your way to the middle.

78



continue with roof sheathing

Star Barn Manual



79



Repeat from left side of dormer Gable.

80



Continue with sheathing.

81



Fasten with 1 1/4" screws 8" on center.

82



Sheathing is now final on roof.

83



Locate V-channel

84



Push V-channel up where Valley comes together. One guy pushes up, while another guy goes on the roof and fasten it with 2 1/2" screws coming from the outside in.

Star Barn Manual



85



Secure V-channel with 2 1/2" screws going into sheathing thru V-channel.

86



Continue with 2 1/2" screws into V-channel.

87



Next locate the corner boxes.

88



Install corner boxes as shown.

89



Secure with 1 1/4" screw into 2x8.

90



Secure with 2 1/2" screws on an angle as shown.

Star Barn Manual



91



Next locate rake trim.

92



Fasten with 1 1/4" screws.

93



Continue to fasten rake trim as shown.

94



Next install trim on the backside and secure with 1 1/4" screws.

95



Continue with trim.

96



Install trim on front side.

Star Barn Manual



97



Install front gable trim.

98



Continue with trim on the left side of the dormer.

99



Install trim on right side of Gable.

100



Next install drip edge. Secure with 1 1/4" screw every 12" to 14".

101



Continue with drip edge up the side.

102



Use tin snips to cut drip edge at peak.

Star Barn Manual



103



After drip edge is cut break drip edge at the peak to run down the other side.

104



Cut drip edge to length.

105



Measure 11 3/4" from the outside of the drip edge.

106



Snap Chalk line.

107



This is a guide line so you know where to place the shingle starter.

108



Next install shingle and secure with 3/4" roofing nails which is included in the kit.

Star Barn Manual



109



Continue shingling as shown.

110



Once you get to the other end cut shingles with a square for a nice edge.

111



Continue with cutting.

112



Install shingles on front left of dormer as shown.

113



Install shingles in a staggered fashion as shown.

114



Continue with shingling

Star Barn Manual



115



Continue with shingles on the right side of the dormer and in a staggered fashion as shown.

116



Next install ridge caps.

117



Make sure cap is centered at peak before fastening.

118



Next locate bases for Cupola.

119



Make sure Top is flush and secure as shown.

120



Next fasten inside corners with 2 1/2" screw. All 4 corners need to be secure.

Star Barn Manual



121



Use 1 1/4" screws as shown.

122



Next lift base as shown.

123



Take the base to the Top of the roof. Shingles will be on before you install the base.

124



This base will be built to set on top of shingles.

125



Secure with 2 1/2" screws as shown make sure base sets level on roof.

126



Fasten inside corner with 2 1/2" screws.

Star Barn Manual



127



Next install cupola walls.

128



Set them per diagram and secure with 2 1/2" screws.

129



Secure with 1 1/4" screw on the outside corner.

130



Continue with walls.

131



Make sure all 3 walls are fastened.

132



Last install panel without vent.

Star Barn Manual



133



Secure all corners with 2 1/2" screws.

134



Next locate cupola top.

135



Install drip edge.

136



Next install starters and fasten with 1 1/4" screws.

137



Install shingles and fasten with 3/4" shingle nails.

138



Cut shingles per diagram.

139



Shingles should look like this.

140



Continue with shingles and cut along ridge as shown.

141



Continue to Top.

142



Once all 4 sides are at top, install flashing before installing last row.

143



Install flashing as shown.

144



Now install last row of shingles.

Star Barn Manual



145



Once last row is complete move to the next picture.

146



Measure cap. If cap measure 12" you measure 6" from ridge and snap chalk line.

147



Install caps starting on the bottom. Use chalk line for guidance.

148



Cut shingle where it overhangs the roof as shown.

149



Make sure all 4 corners are started before you lift it on top of Cupola. Finish ridge vents, after roof is installed.

150



Lift roof as shown. It will take 4 men to lift it onto the roof.

Star Barn Manual



151



Roof is on top of the Cupola.

152



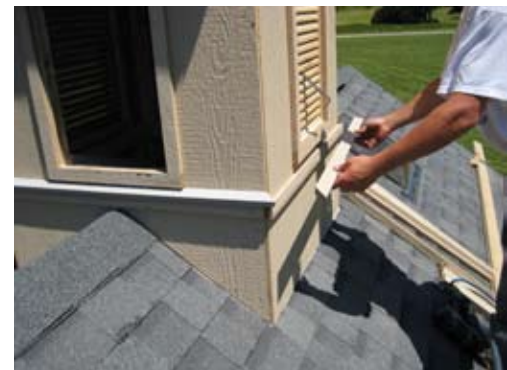
Make sure the roof is divided up on all 4 sides.

153



Cupola will be installed after roof is shingled.

154



Install Cupola trim as shown and secure with 1 1/4" screws.

155



Continue with corner trim. Secure with 1 1/4" screws.

156



Install trim on all corners.

Star Barn Manual



157



Vent installation...

158



Manuver vent into Cupola

159



then pull vent outward towards yourself.

160



Insert 1 1/4" screws on each side.

161



Run a bead of chaulking on all places where water can get to.

162



Continue with chaulking.

Star Barn Manual



163



Next locate all trim boards.

164



Install trim board as shown and fasten with 2 1/2" screws into studs.

165



Continue to install trim board.

166



Next locate star for vent trim.

167



Install star on the outside of vent as shown, secure with 1 1/4" screws.

168



Put a bead of caulking on the area where water can get behind.

Star Barn Manual



169



Continue with caulking.

170



Now install small trim on top of wider trim as shown, Secure with 2 1/2" screws.

171



Continue installing trim as shown, secure with 2 1/2" screws.

172



Next locate trim for the corners.

173



Fasten with 2 1/2" screws.

174



Locate all decorative trim.

Star Barn Manual



175



Install as shown.

176



Secure with 2 1/2" screw as shown on top.

177



Secure with 2 1/2" screws as shown on the bottom.

178



You will find these special for the peak only.

179



Continue fastening as shown before with 2 1/2" screws.

180



Decorative trim on Gable sides are cut at an angle.

Star Barn Manual



181



Continue with trim.

182



Now install wide trim board on backside as shown, Secure with 2 1/2" screws into 2x4 studs.

183



Next install narrow piece of trim as shown and secure with 2 1/2" screws into 2x4 studs.

184



Next install decorative trim and secure as shown before with 2 1/2" screws.

185



Continue with decorative trim.

186



Make sure to use square as shown before fastening.

Star Barn Manual



187



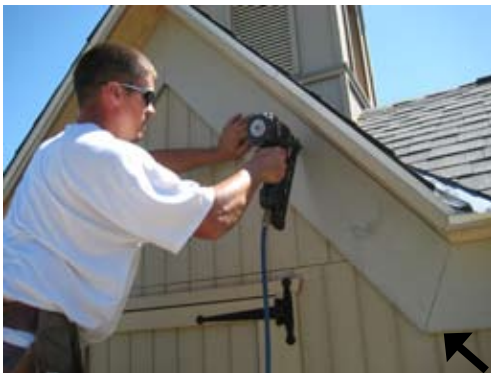
Install wide trim on front, secure with 2 1/2" screws into 2x4 studs.

188



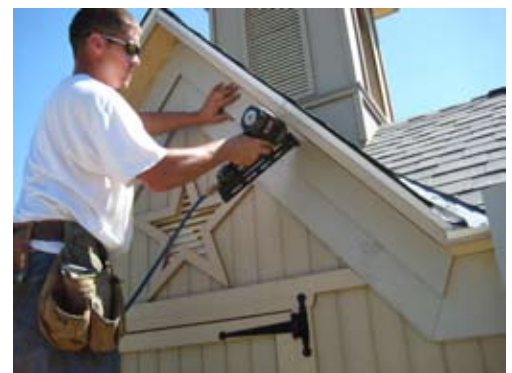
Continue with trim on front.

189



Make sure ends will fit .

190



Next install narrow trim on top of wide trim, secure with 2 1/2" screws.

191



Continue with trim.

192



Next install decorative trim.

193



Continue with decorative trim.

194



This is showing to install trim on cupola.

195



Locate window trim.

196



Divide trim from top to bottom.

197



Secure with 1 1/4" screws.

198



Next install top piece which is cut on an angle on both ends.

Star Barn Manual



199



Bottom piece is cut the same as the top.

200



Locate all 4 outside corners.

201



Secure with 1 1/4" screws.

202



Last of all before you get off the roof, install the trim under the overhang.

203



204



Your finished product!